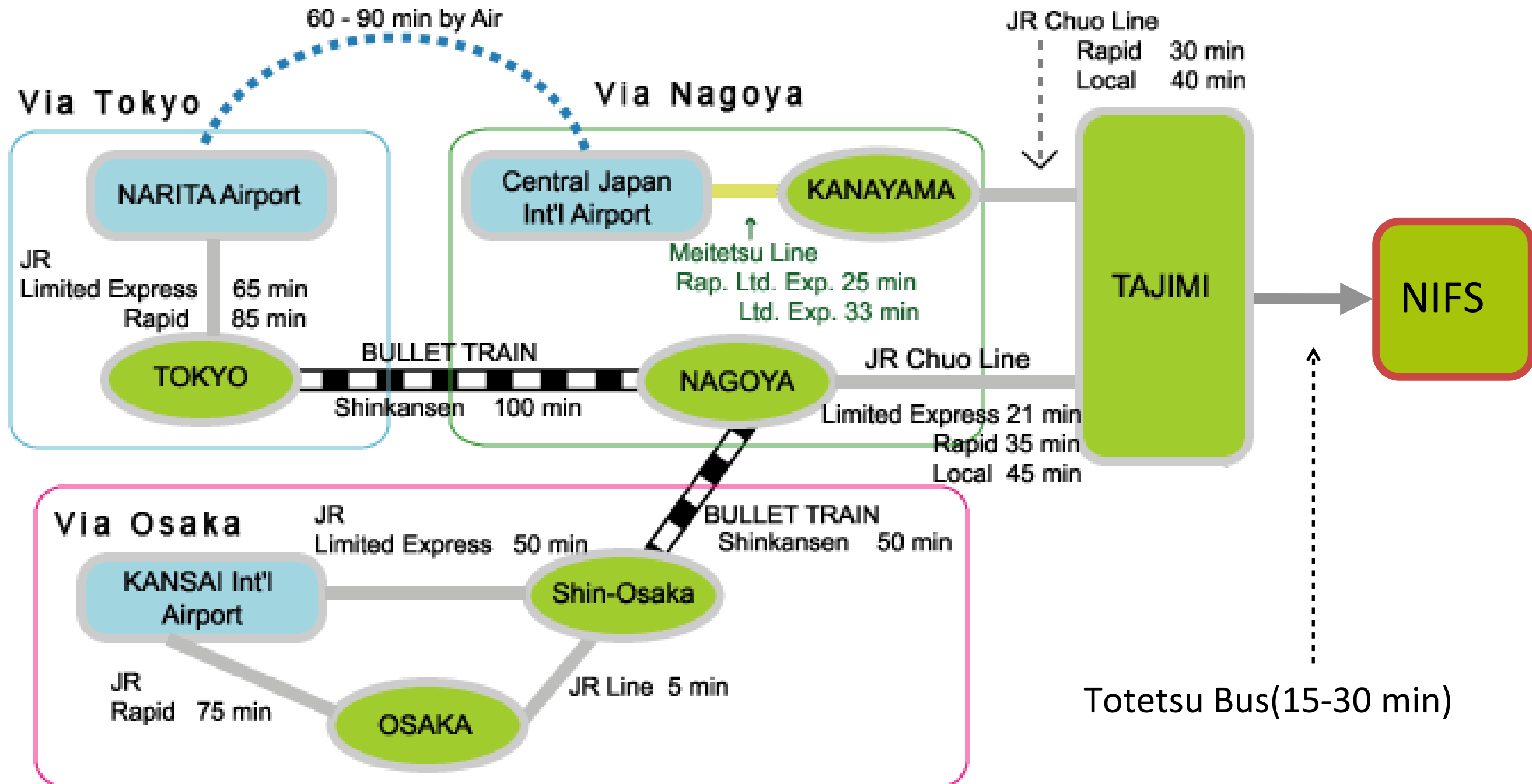


# Access to the meeting venue

Access from Airports :

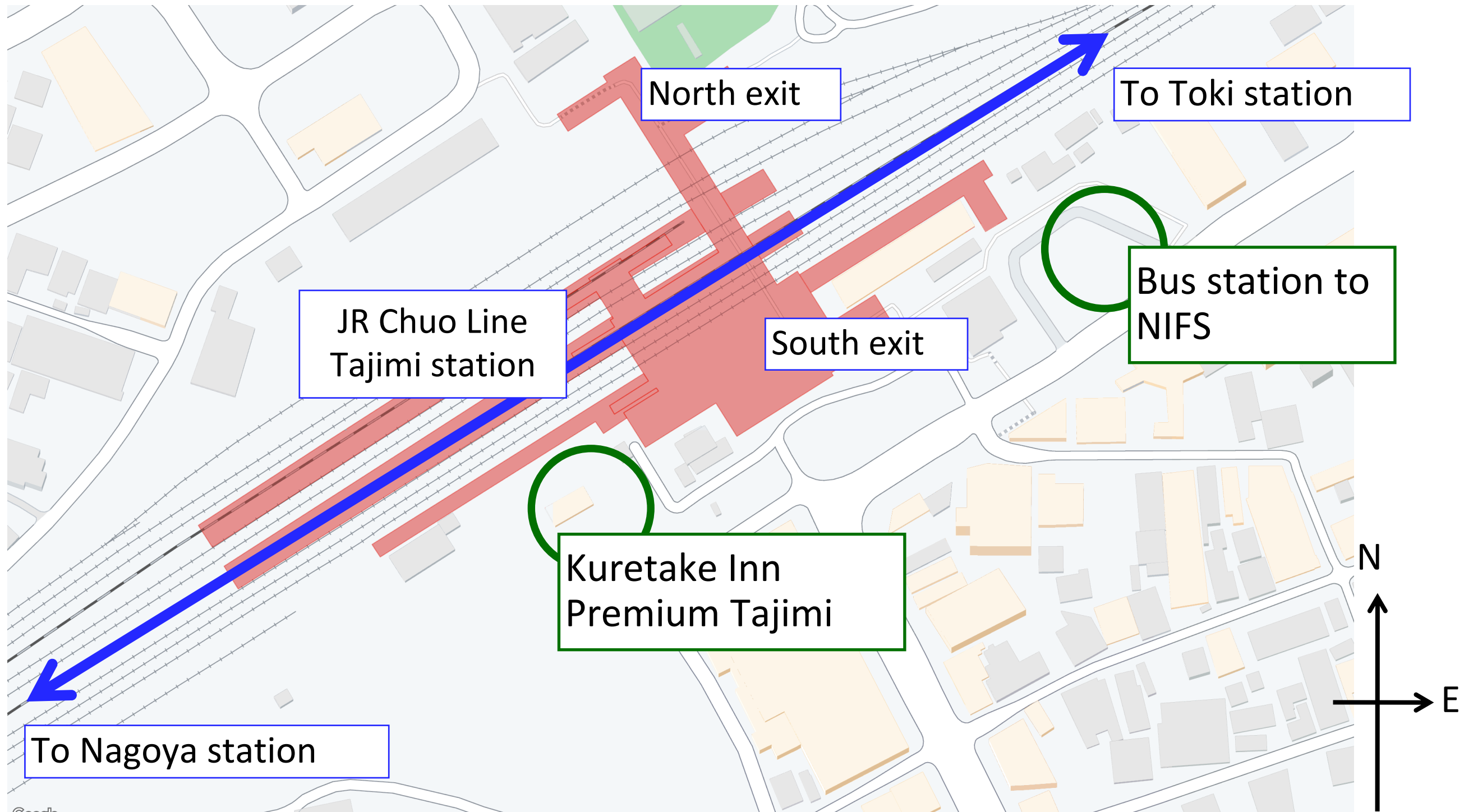
<https://www.nifs.ac.jp/en/access.html>



# Map around Tajimi station

## Kuretake Inn Premium Tajimi

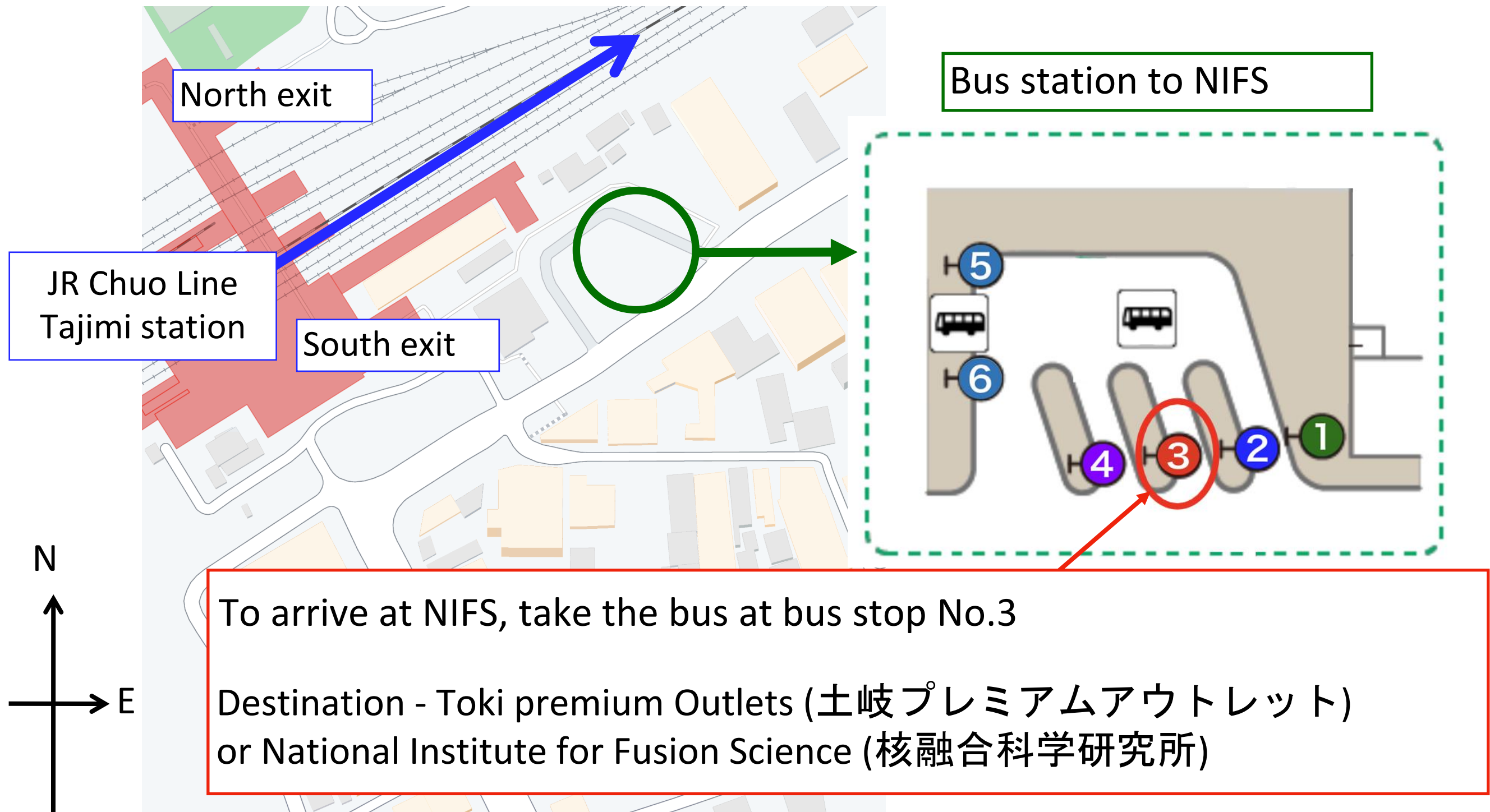
<https://www.booking.com/hotel/jp/kuretakeinpuremiamuduo-zhi-jian-yi-qian.html>



# Map around the Bus station

How to ride a bus : [https://www.nifs.ac.jp/en/HowtoRide\\_Bus.pdf](https://www.nifs.ac.jp/en/HowtoRide_Bus.pdf)

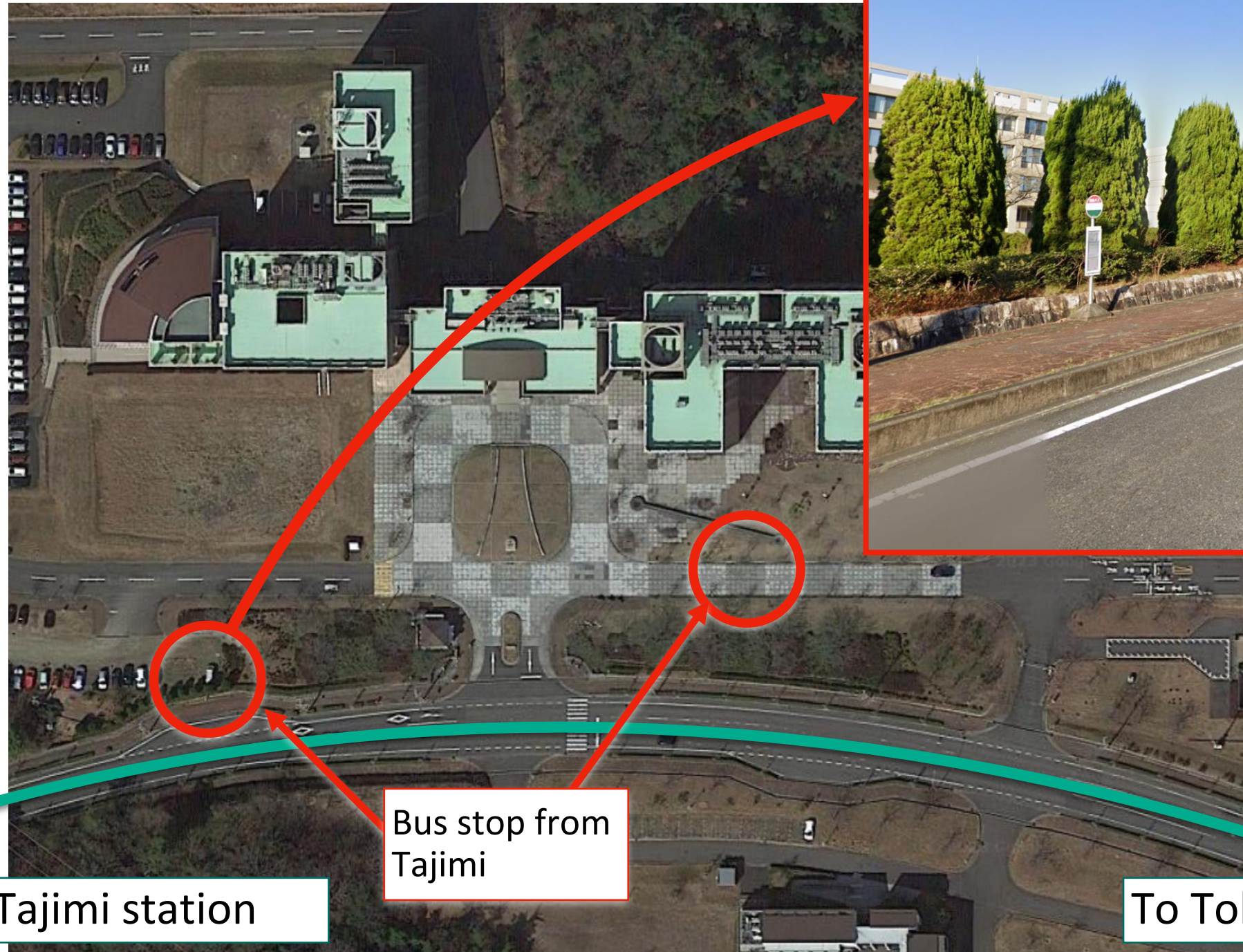
Bus time table : <https://www.nifs.ac.jp/en/bus-e.pdf>





# Map around NIFS (1)

Bus stop outside NIFS



Bus stop from  
Tajimi

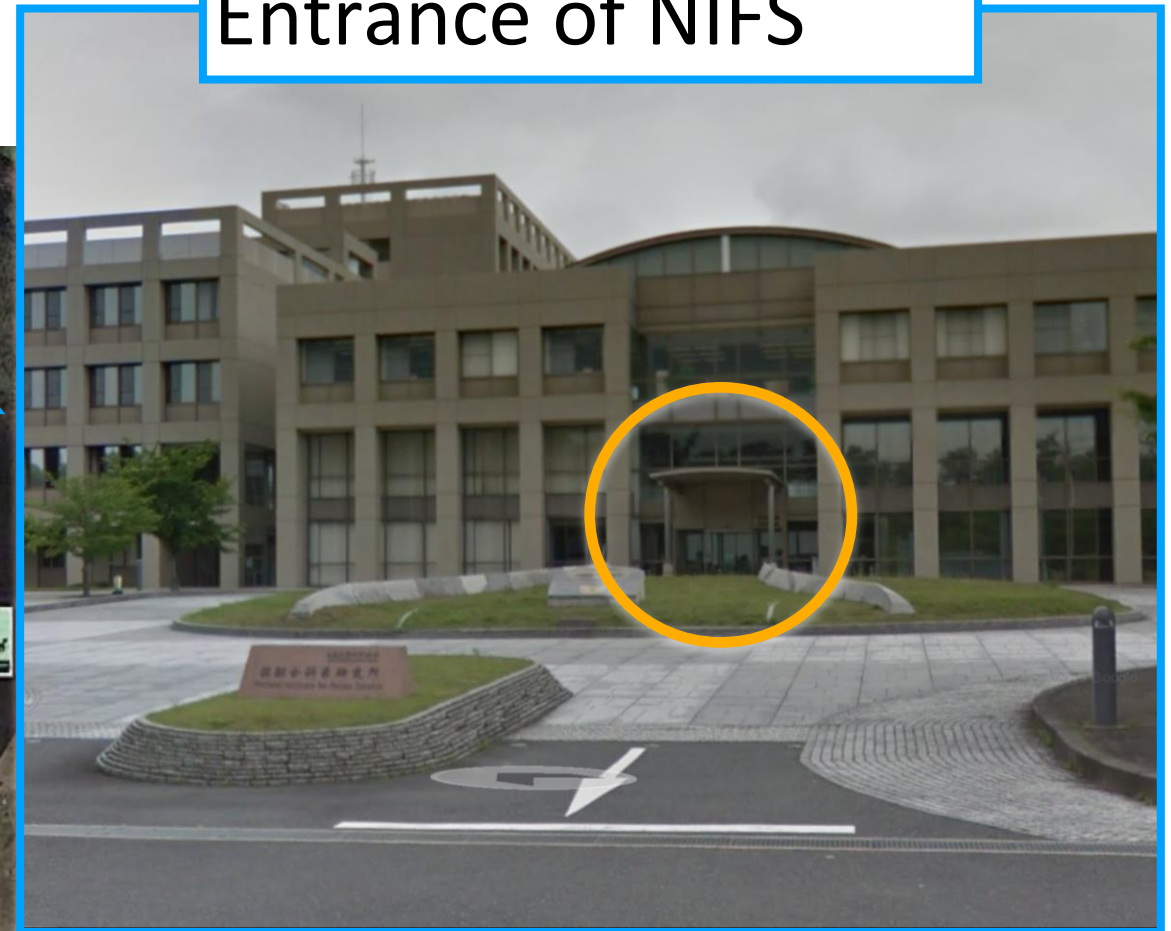
To Tajimi station

To Toki Premium Outlets



# Map around NIFS (2)

Entrance of NIFS

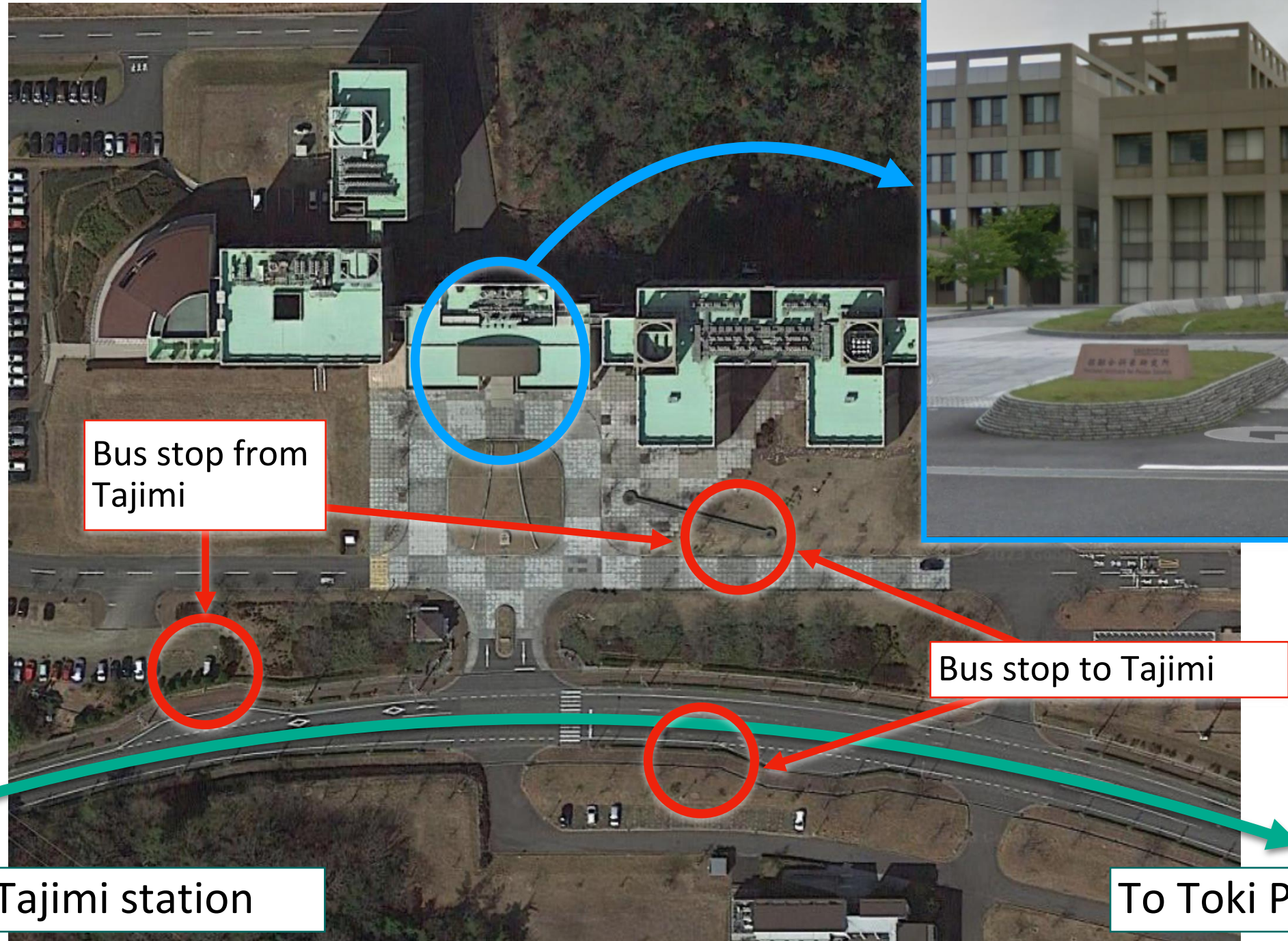


Bus stop from Tajimi

Bus stop to Tajimi

To Tajimi station

To Toki Premium Outlets



# Bus timetable

## Weekday

Towards Kenkyu-Gakuen-Toshi Center or Toki Premium Outlets		Towards JR Tajimi Station	
Departs at JR Tajimi Sta.	Arrives at NIFS	Departs at NIFS	Arrives at JR Tajimi Sta.
*8:07	8:24	8:06	8:28
8:30	8:50	8:30	8:52
9:25	9:45	9:14	9:33
10:10	10:30	9:54	10:13
10:40	11:00	10:09	10:28
11:10	11:30	10:19	10:38
12:10	12:30	10:54	11:13
13:10	13:30	11:24	11:43
14:10	14:30	11:54	12:13
15:10	15:30	12:54	13:13
16:10	16:30	13:54	14:13
16:55	17:15	14:54	15:13
17:10	17:30	15:54	16:13
17:55	18:15	16:54	17:16
18:15	18:35	*17:25	17:45
18:40	19:00	17:54	18:16
19:55	20:15	*18:22	18:42
		18:59	19:18
		*19:23	19:40
		20:59	21:18

asterisks (\*) refers to non-stop buses.

	Wait at the bus stop inside NIFS
	Wait at the bus stop on the street outside NIFS

## Weekend/Public holidays

Towards Toki Premium Outlets		Towards JR Tajimi Sta.	
Departs at JR Tajimi Sta.	Arrives at NIFS	Departs at NIFS	Arrives at JR Tajimi Sta.
9:15	9:35	9:29	9:48
10:10	10:30	9:59	10:18
10:40	11:00	10:24	10:43
11:10	11:30	10:54	11:13
12:10	12:30	11:54	12:13
13:10	13:30	12:54	13:13
14:10	14:30	13:54	14:13
15:10	15:30	14:54	15:13
15:25	15:45	15:54	16:13
16:10	16:30	16:54	17:13
17:10	17:30	17:54	18:13
18:20	18:40	19:04	19:23
19:20	19:40	20:04	20:23
20:50	21:10		

	Wait at the bus stop inside NIFS
	Wait at the bus stop on the street outside NIFS

Updated on March 15, 2025

\*\*There is no bus service on the following dates: 12/29-1/3 and 8/13-8/15.

NIFS



## ☆How to Ride a Bus☆



### 【When getting on the bus】

- ① Ride from the middle door of the bus.
- ② You will see a numbered ticket machine at the middle door entrance.  
Take one number ticket per person from the machine.  
※There is no numbered ticket at the bus stop from which the bus begins to travel. Therefore, you can ride the bus without a numbered ticket.



Number Ticket Machine

### 【When getting off the bus】

- ① When the bus stop name of your destination is announced or indicated on the electronic bulletin board at the front, please press the button 「とまります」 near your seat to get off at the next stop.



Button 「とまります」

### ★Bus Stop Name at NIFS★

核 融 合 科 学 研 究 所
NATIONAL INSTITUTE FOR FUSION SCIENCE



Electronic Bulletin Board

### ★Destination★

To NIFS : 【核融合研究所】 (Kakuyugo Kenkyujo)

or

【土岐プレミアムアウトレット】 (Toki Premium Outlets)

To Tajimi Station : 【多治見駅】 (Tajimi Eki)

② When arriving at the bus stop, please put coins and your number ticket into the fare box beside the bus driver and get off at the front door.

The fare between Tajimi Station and NIFS is “360 Yen” .

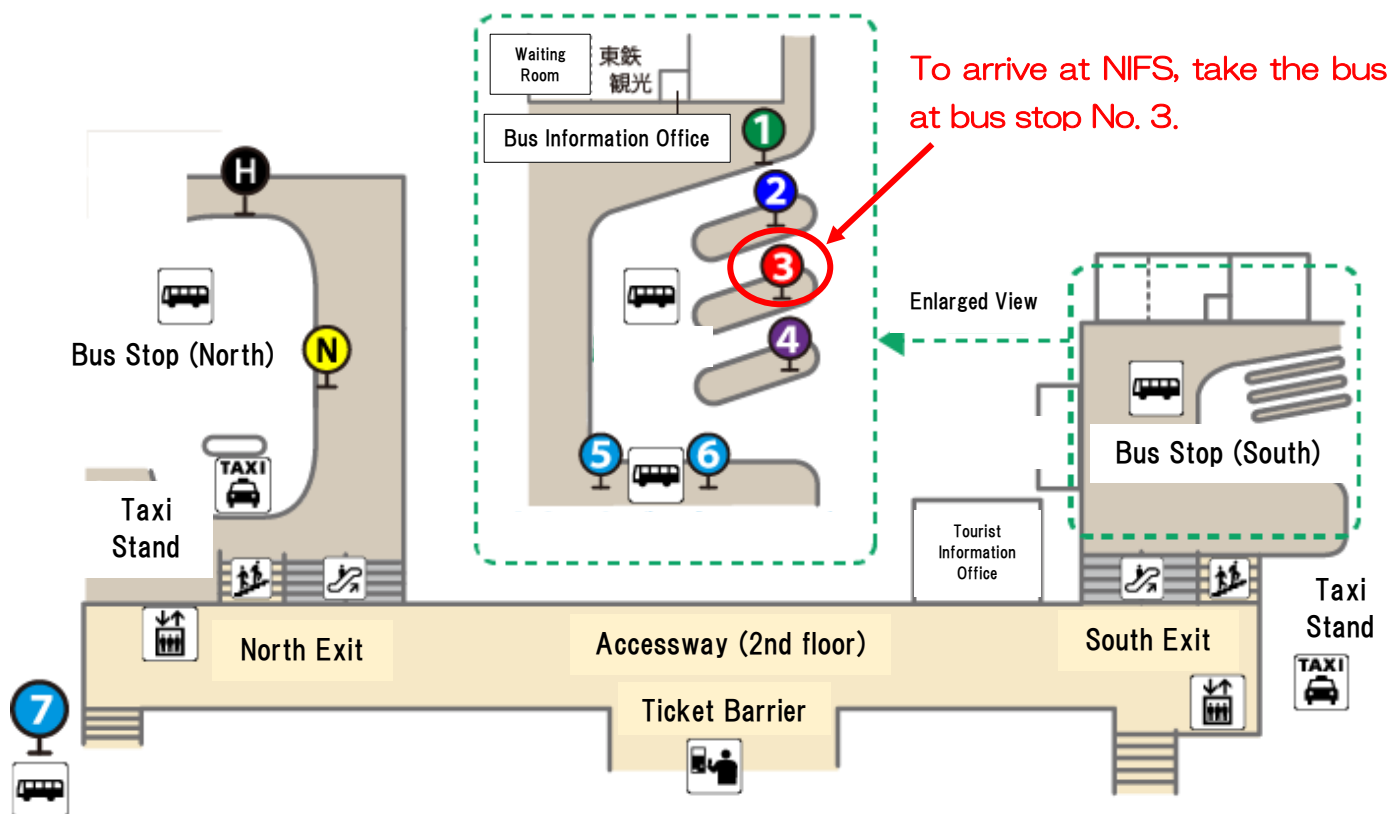
The route is 【学園都市線】 (Gakuen Toshi Sen).

※If you do not have small change, please exchange at the money changer in advance. Only 1,000 Yen bills and coins may be used for exchanging money.

Fare Box  
Money Changer



## ★Tajimi Station Bus Terminal★





For the local transportation around JR Tajimi station, we have quite few guidance available in English or other languages. Please refer to the following translation for your understanding of the Japanese notations.

## Appellation

Kanji (Chinese Character)	Pronunciation	Description
東鉄	Totetsu	Bus company
東濃鉄道	Tono Tetsudo	
とうてつ	Totetsu	
多治見駅前	Tajimi Eki Mae	Destinations
研究学園都市センター	Kenkyu-Gakuen-Toshi Center	
妻木上郷	Tumagi Kamigo	
駄知	Dachi	
瑞浪駅前	Mizunami Eki Mae	
小谷口	Ko Tani Guchi	
		Bus stop

## General Expressions

Kanji (Chinese Character)	Pronunciation	Meaning
タクシー	taxi	taxi
バス	bus	bus
降車場	Kou sha jo	The place is exclusively prepared for the way-out. You cannot ride on a bus from this place.
運賃	Un chin	Bus fare